

We Are
EPIC





OUR COLLECTIVE VISION

To create an **inclusive world** with
response-able people driven by a
heart of service









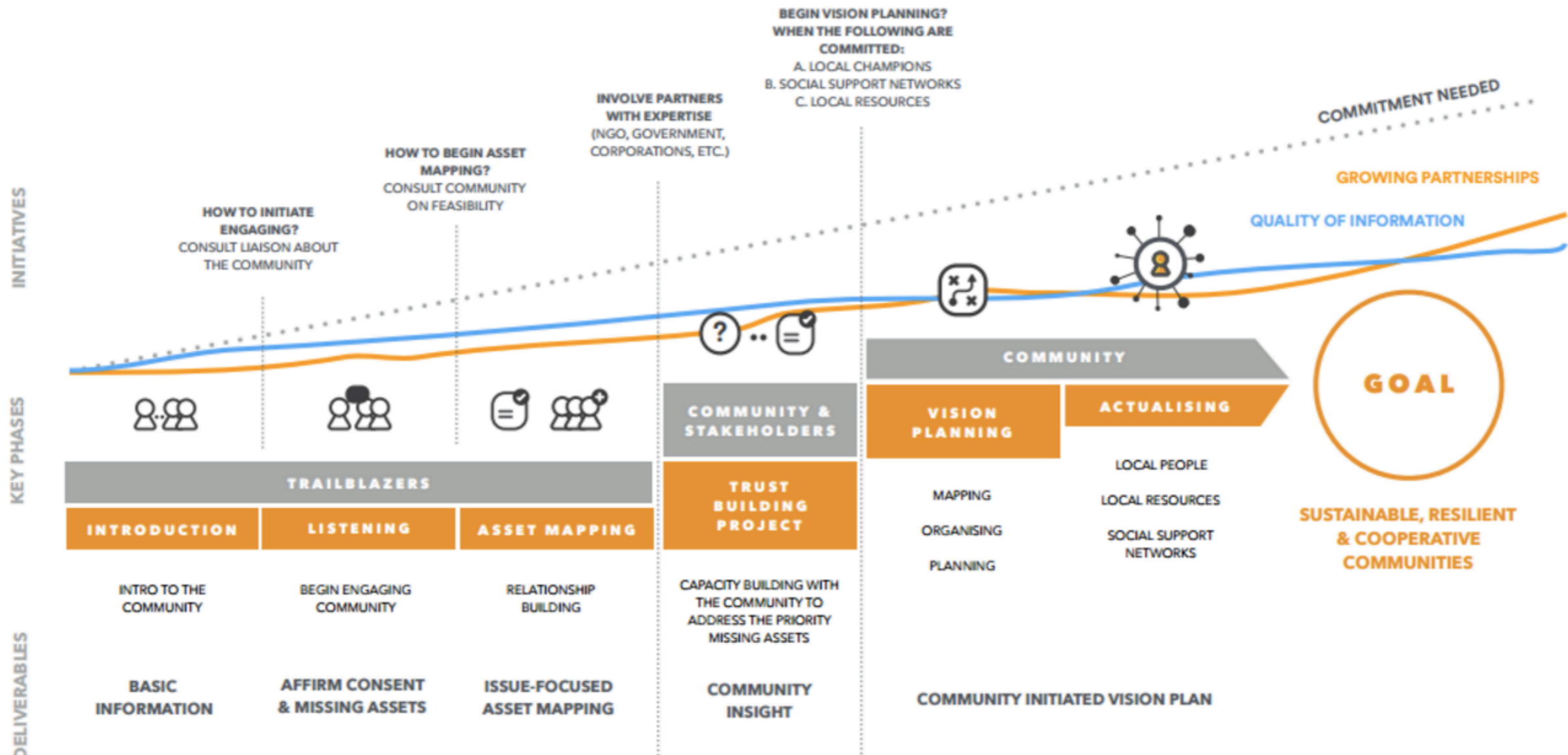
To date we have:

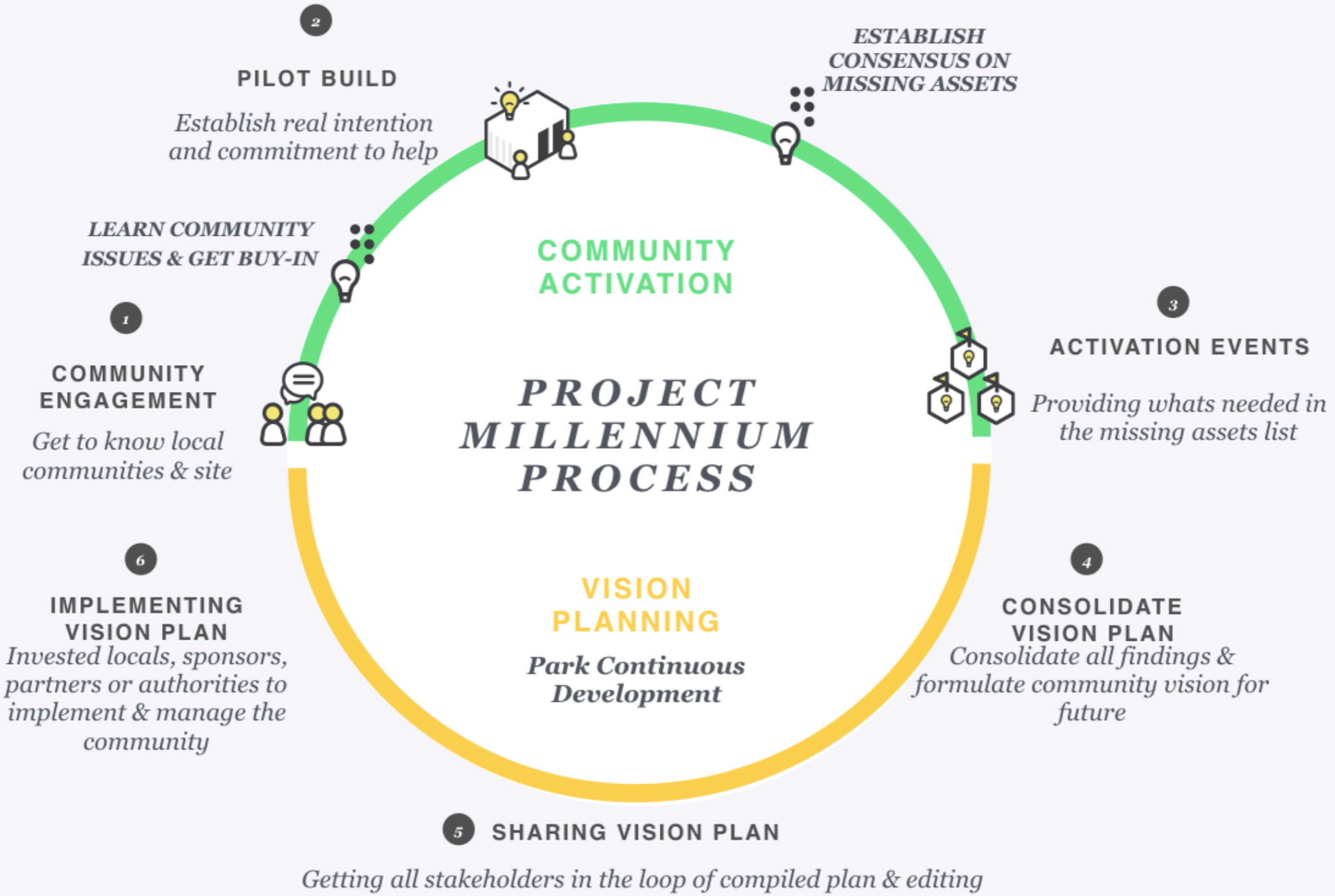
90+
HOMES

5000+
Builders

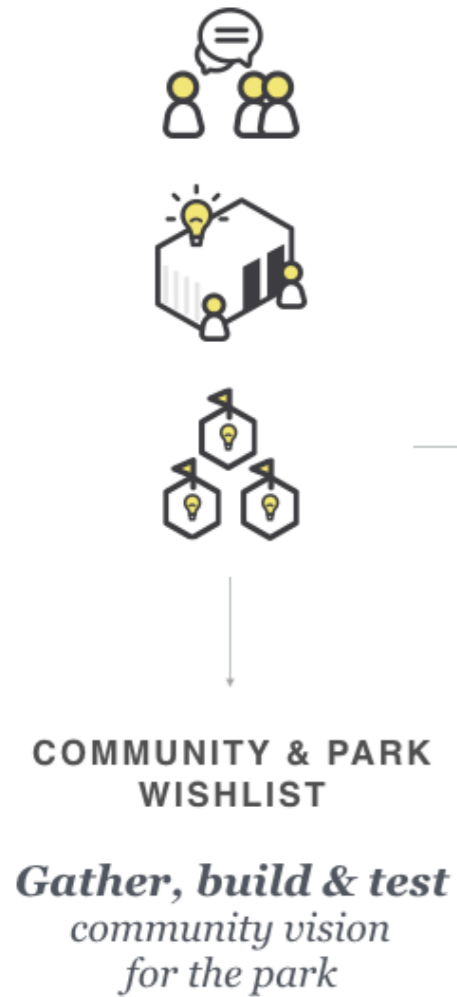
Appendix

EPIC'S TRANSFORMATION BLUEPRINT





VISION PLANNING



ADOPTION

Who will adopt park zones based on community wishlist?

Be an adopter!



*Adopting a park zone by creating **solutions & programs** based on community wishlist*



SPONSORSHIP

Who will fund / support adopted ideas?

Be a sponsor!



Contribute by financing or sponsoring funds, materials or human resources (matched to programs)



MAINTENANCE

Who will manage & maintain the well-being of the park?

Join the committee!



Manage the park as a local community & keep tabs on well-being of the park



COMMUNITY UPKEEP

How will the local community continue to support & be supported?

***open to JKP Zone 1 areas only**

VISION PLAN 2.0
Local community kickstarts & manage



Contribute as a

ADOPTER

POTENTIAL ADOPTERS



CONTRIBUTION ROLES

Create **solutions** based on community wishlist

Create **programs** for local communities to participate



Support as a

SPONSOR

POTENTIAL SPONSORS



CONTRIBUTION ROLES

Finance the community

- Municipal and Government -CSR
- Team Building
- Investment
- Crowdfunding

Sponsor **materials**

Mobilise **volunteers or groups** to activate ideas together with the community



Join in the

COMMITTEE

POTENTIAL COMMITTEE



CONTRIBUTION ROLES

manage **operations**

manage **security**

Propose **solutions / programs**

Ensure community **well-being**

Update on **community wishlist**

Thank you!

www.epic.my
johnsonoei@epic.my
fb.com/johnsonoei