

CONSERVATION AND INCLUSIVENESS IN MARINE PARK AREAS: SHADES OF POVERTY AMONG MARGINALISED GROUP.

Assoc. Prof. Dr. Fatimah Kari
Faculty of Economics and Administration
University Malaya, 50603 Kuala Lumpur
fatimah_kari@um.edu.my

*The 1st Asia-Pacific Senior Officials Meeting and Ministerial Forum of
Management of Social Transformations Programme (MOST)*

Hotel Sunway Putra, Kuala Lumpur 20 - 23 March 2017.

Sub-Theme: "Building Inclusive Societies in Asia Pacific"



**CPDS
MARCH**



5/21/17

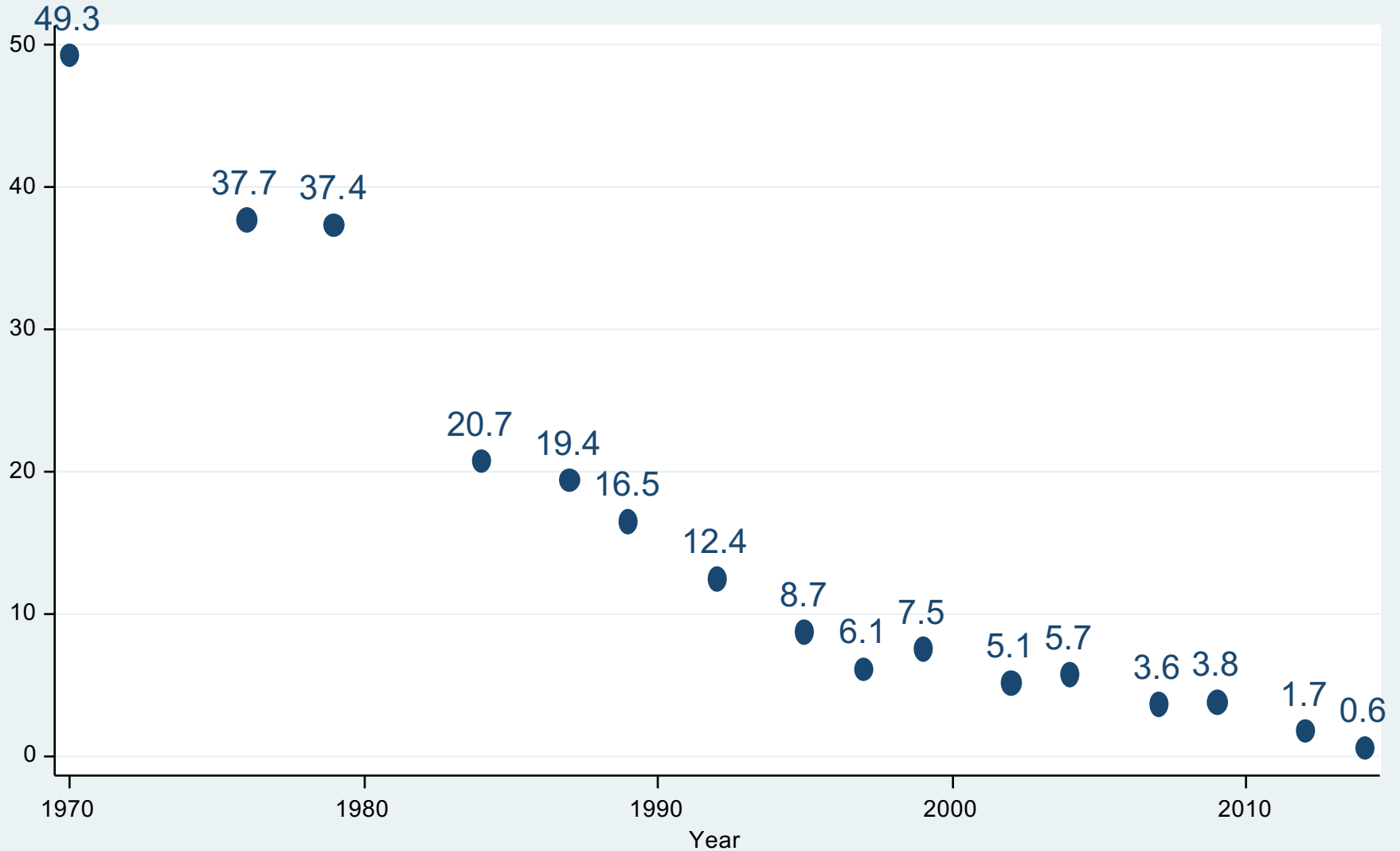
Presentation Structure

- Introduction
- Poverty Profile in Malaysia : From Aggregated to Micro Perspectives

Beyond Poverty : The need for Inclusiveness

- Poverty and climate Change Policy
- Knowledge Transfer program – University to the Community
- From Theory to Practices, From Single Discipline to Multi-Discipline/ Evidence Based Research
- Conclusion: Take Home Points

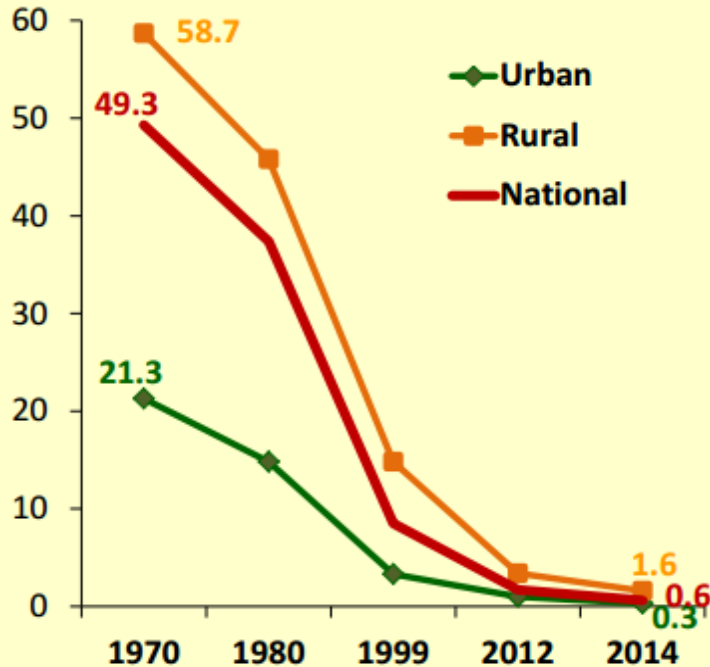
Proportion of households below PLI, 1970-2014



Significant reduction in poverty

1 Tremendous achievement in poverty eradication

% of Households



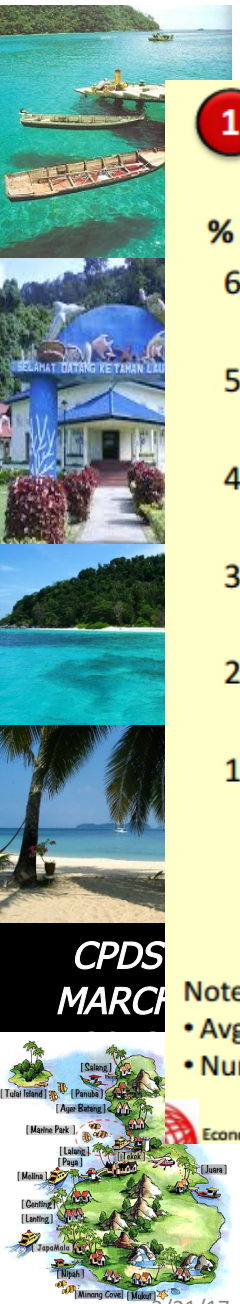
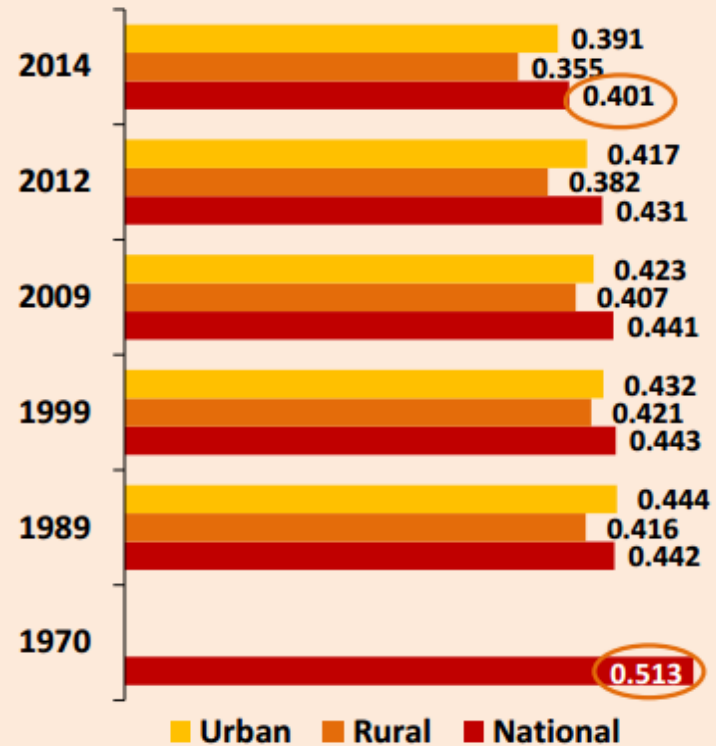
Note: For 2014

- Avg. monthly poverty line income = RM950/USD290
- Number of poor households = 42,800

Economic Planning Unit ©, Prime Minister's Department, Malaysia

2 Income inequalities has declined

Gini Coefficient



CPDS
MARCH



**CPDS
MARCH**



5/21/17



Strategic Thrust 1 - 11th Malaysia Plan

Enhancing inclusiveness towards an equitable society

Main strategies and selected outcomes

RM 5,270

Uplifting B40 households towards a middle class society



Mean monthly household income in 2020 from RM2,537 in 2014

Empowering communities for a productive and prosperous society

8 out of 10

Average score in the Family Wellbeing Index



Accelerating regional growth for better geographical balance

Job creation

470,000

Realised investment

RM 236 billion

3,000 km

Paved roads will be constructed

90,000

Additional houses to receive clean water supply

Transforming rural areas to uplift wellbeing of rural communities

36,800

Additional houses to receive the electric power supply



Corporate equity owned by Bumiputera

At least 30%

Bumiputera participation in skilled occupation category

At least 60%

Enhancing opportunities for the Bumiputera Economic Community (BEC) to increase wealth ownership

Beyond Poverty : Climate Change of Climate Change

On the regional level, climate change is superimposed on the existing climatic conditions and manifests itself through:

- 1/ Changes in average climatic conditions. For example, some regions may become **drier or wetter on average** (IPCC 2001a).
- 2/ Changes in climate variability. For example, **rainfall** events may become more erratic in some regions.
- 3/ Changes in the **frequency and magnitude of extreme events** (IPCC 2001a; 2001b).
- 4/ Changes in **sea levels**, which are projected to rise by between 0.09 and 0.88 meters by 2100 relative to 1990 (IPCC 2001a)



CPDS
MARCH



5/21/17

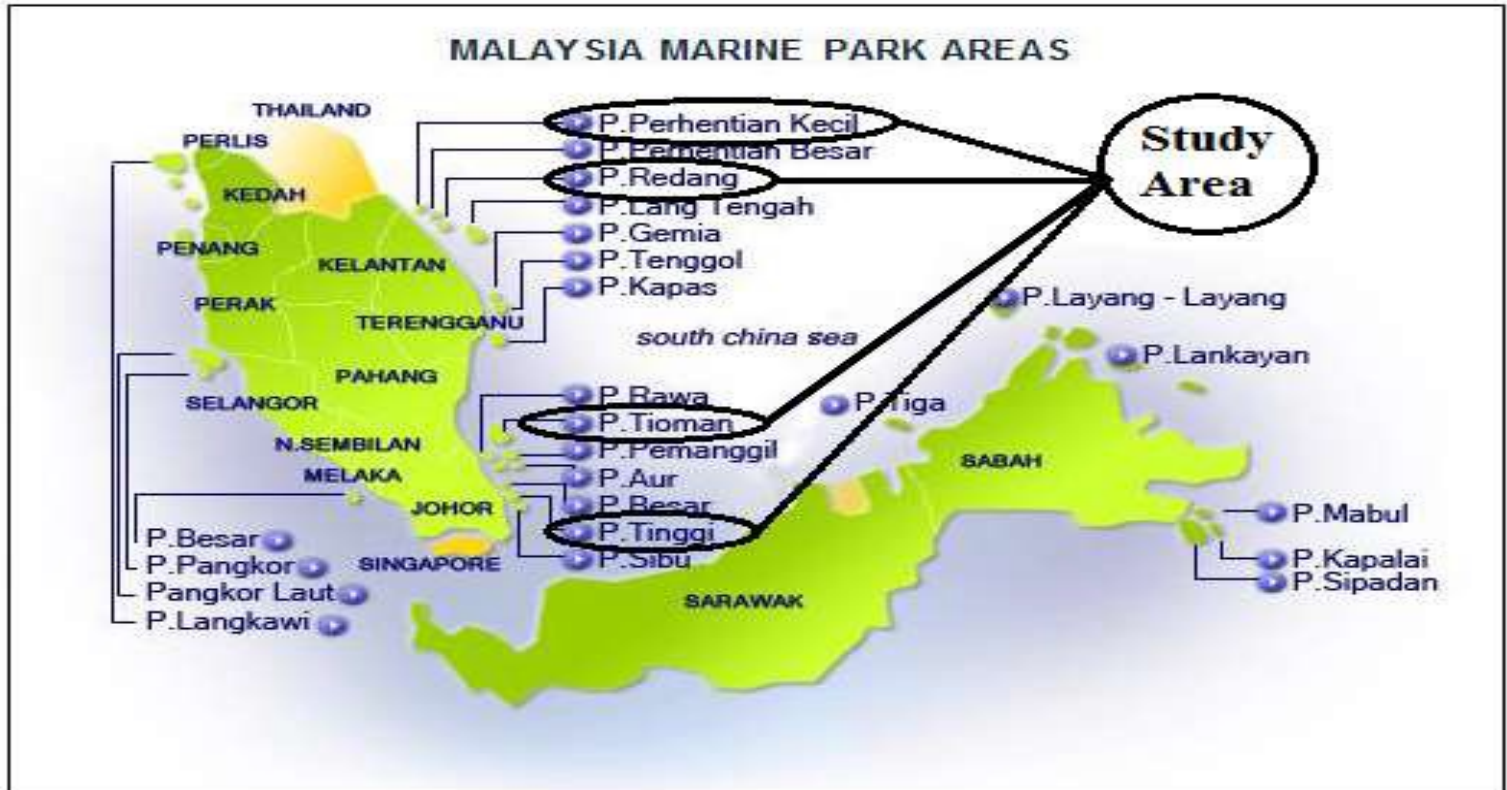
Marine Park Areas in Malaysia



CPDS
MARCH



3/21/17





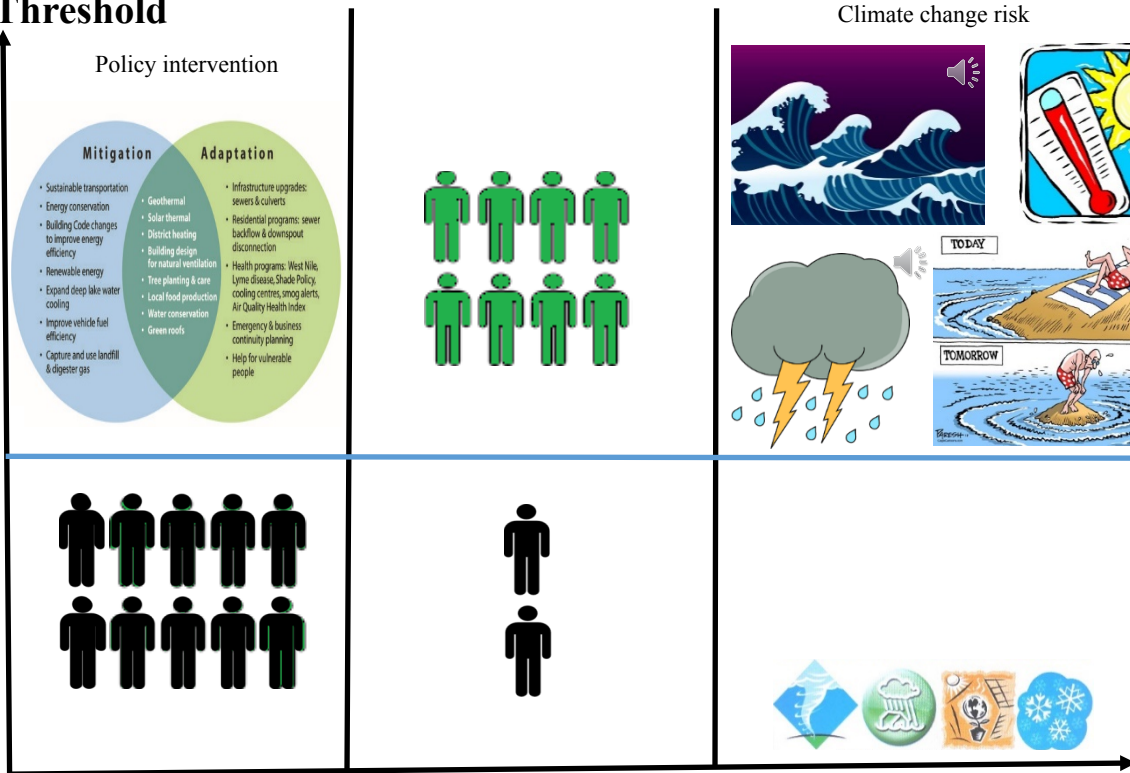
**CPDS
MARCH**



5/21/17

Poverty Threshold

Poverty
Line



Knowledge Transfer Program : University to Community

- To recognise and promote the transfer of knowledge via the exchange of creative and innovative ideas, research findings, experiences and skills between IPTA, research organizations, industries, government agencies and the wider community.
- To enable the development and improvement of the quality of products, services and policies to be shared for mutual benefits between the stakeholders i.e. academia, industry, community and the graduated/postgraduate intern.
- <http://www.ump.edu.my/en/industry/knowledge-transfer-programme-ktp>
- Knowledge Transfer – Community Empowerment and Being Inclusive.



CPDS
MARCH



5/21/17

Knowledge Transfer Program (KTP) University – Community (2014-2016)

Mentoring Koperasi Penduduk Pulau Rompin Berhad (KPT Berhad) in Social Entrepreneurship Practices



**CPDS
MARCH**



5/21/17

OBJECTIVES of the Program

This program attempts to fulfill the following objectives:

- a) To eradicate poverty among low income households;
- b) To help and guide local cooperative in social entrepreneurship practices; and
- c) To mentor local cooperative to venture into strategic high income activities within the green tourism sector.

TYPES OF KNOWLEDGE TO BE TRANSFERED

- a) Knowledge transfer by giving hands-on training to members and the community in general.
- b) Nurturing and building 'self-help' and 'self-determined' attitude among the members ;
- c) Enabling the members to write business plans/proposals to explore market potential in small scale enterprises
- d) Instilling the skill to manage social enterprise to become highly profitable business entity.



**CPDS
MARCH**



5/21/17

Program (Implemented)

- Youth and Ocean Deep Photography
- Cooperative Management /Leadership program
- Homestay Tourism
- Bakery and Culinary
- **Women (Home Based Employment)**
- Education and Motivation
- **Natural products Honey Production from TRIGONA BEES (Kelulut)**
- Language Class (English)
- Micro Enterprise Class
- Book Keeping
- Leadership and Change
- Business Plan
- Green Technology (Composting)
- Scuba Diving Courses



CPDS
MARCH



5/21/17

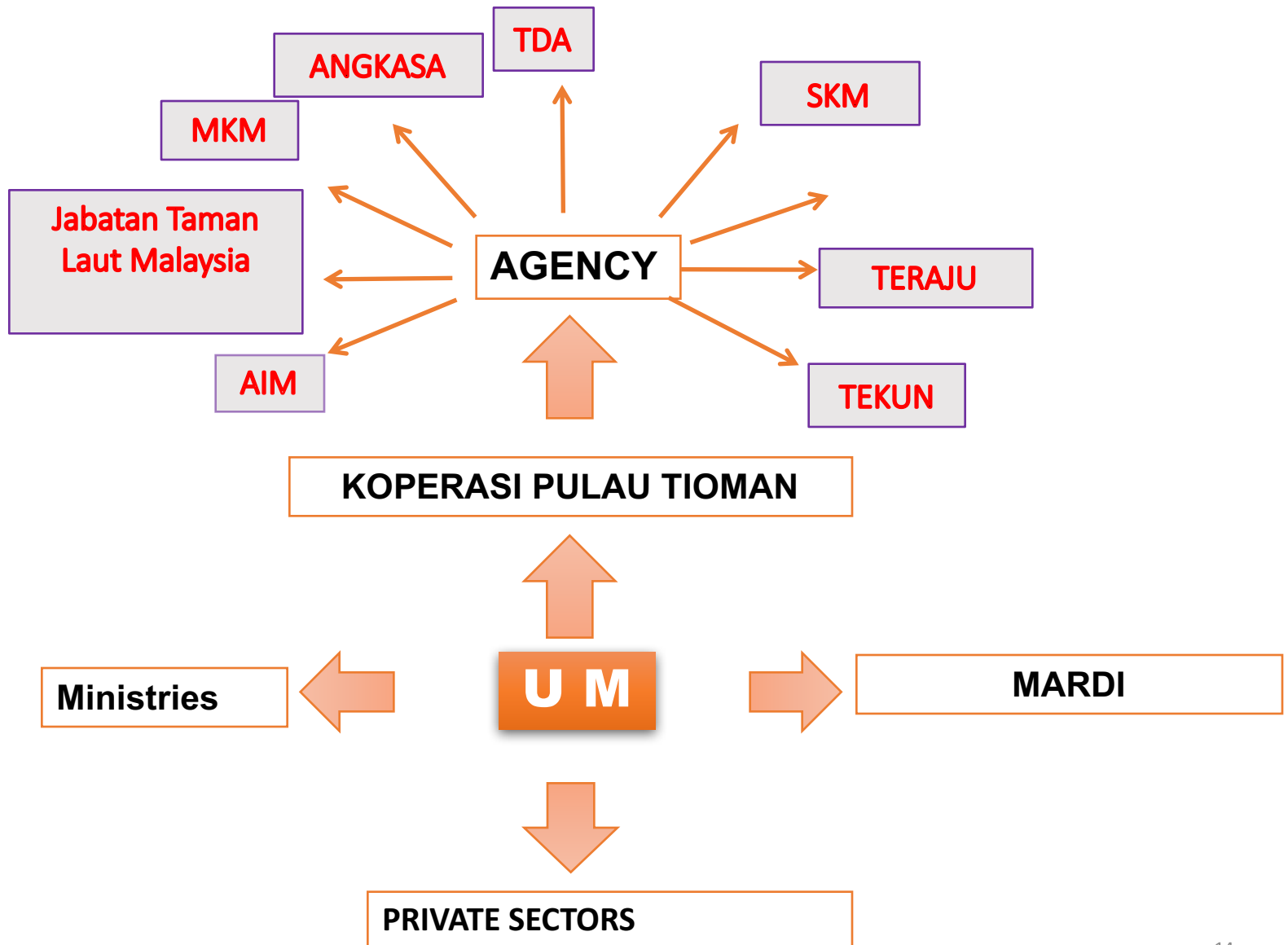


CPDS
MARCH



5/21/17

Stakeholders



Knowledge (S &T) Based Support

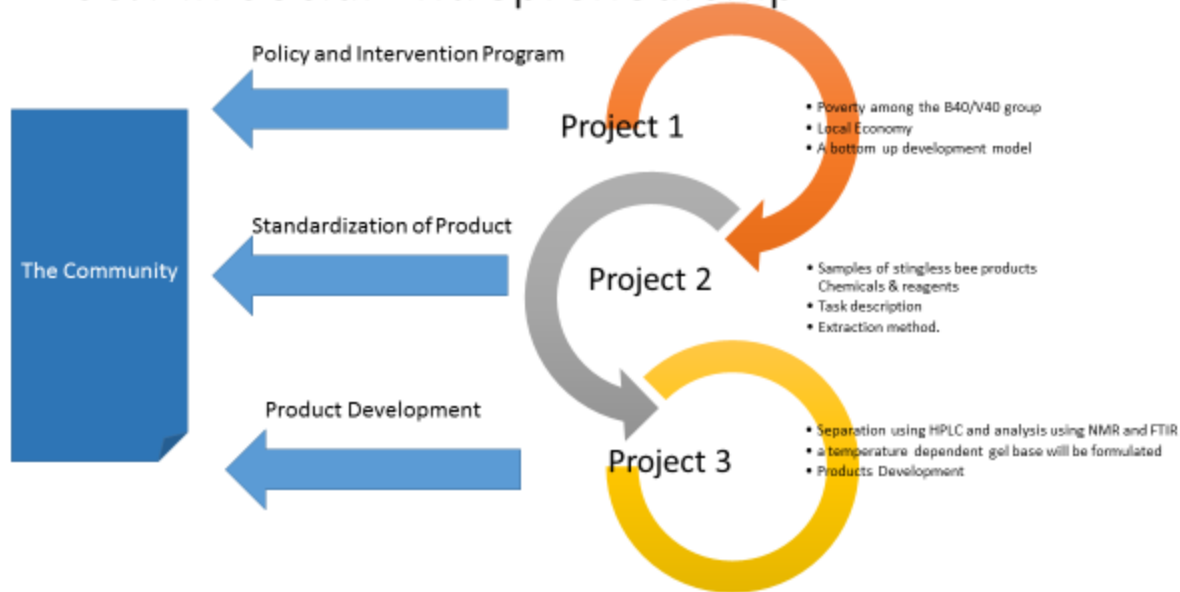


**CPDS
MARCH**



5/21/17

S&T in Social Entrepreneurship





Findings

Target People	Leadership : Social Enterprise such as Cooperatives : Local Economy Touch Point Cooperative and Financial Literacy Linking Poverty and Employment at the local economy	
Relevant Factors	<p>Economic: Diversifying source of income (fishery and beekeeping) Low average of income and high cost of living Fluctuating and seasonal income (Monsoon season)</p> <p>Environment: Existence of Trigona bees; authentic honey products High bees population Sustaining green-environment; boasting eco-tourism</p>	<p>Social: Youth urban migration Low social union Low awareness on bees' significance</p>
Effective Empowerment (Niche Area/Business)	<p>Empowered Villagers: Fishermen and housewives use beekeeping to boost household earnings</p> <p>Empowered Beekeepers: Equipped with marketing and commercialization technique</p> <p>Empowered Community: Expansion beekeepers to neighboring village</p>	
Approach	<p>Business Approach: Engaging with other agencies such MARDI and Great Farm Market segmentation of honey production – soap products Self-funded venture</p> <p>Economic Approach: Performance ratio: higher profit margin and lower cost of production</p>	

Take Home Points: Knowledge Transfer Problem – University to Community



**CPDS
MARCH**



5/21/17

- Leadership (Managing Local Community)/Good governance of Cooperative (Trouble shoot Module)
- Poverty (Ground Zero); The Role of Hard Science
- Future Community Engagement with strong Industrial Network
- To be used as Interim Platform i.e. Undergraduate Community Voluntarism
- Community (Knowledge Transfer Program: Thematic and Continue to be Solution Based)
- Emphasis on bottom up community development – identifying their problem and needs and bring short term to long term solution (sustainability)
- Cooperatives and Local Economy: An Endowment Perspective (WAQF) Instrument framework
- Challenge : Funding and policy input for policy makers



**CPDS
MARCH**



5/21/17

PICTORIAL JOURNAL



Mitigation Policy Option : Overload



3/21/17

Trans –Discipline : Evidence Based Research



CPL
MAR



Product Innovation : Green Local Economy

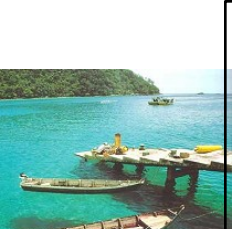


**CPDS
MARCH**



5/21/17





Women Group : Movers and Shakers.....





**CPDS
MARCH**



5/21/17

TERIMA KASIH / THANK YOU