



# **GENDER MAINSTREAMING AND WOMEN EMPOWERMENT: Experience of Building Inclusive Societies: INDONESIA**

**Bambang P. S. Brodjonegoro**

**Minister of National Development Planning/  
Head of National Development Planning Agency**

**Presentation for the Asia-Pacific Ministerial Forum of Management of Social Transformation Programme (MOST)  
Kuala Lumpur, March 23<sup>th</sup> 2017**

# OUTLINE

---

## I. Background and Context

## II. Achievement of Gender Equality in Indonesia related to MDGs Indicators

## III. Efforts that have been made in Improving Gender Equality in Indonesia

### 1. Gender Mainstreaming in Every Stage of Development

### 2. Gender Mainstreaming in SDGs in Indonesian Policy

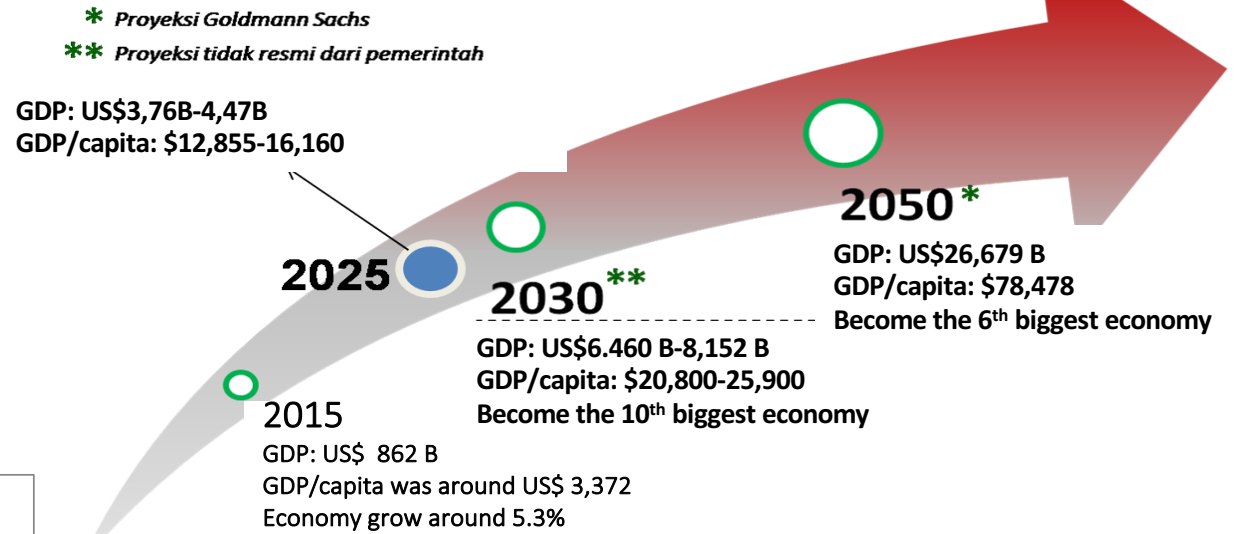
### 3. Example of Good Practices

## IV. Challenges and Recommendations

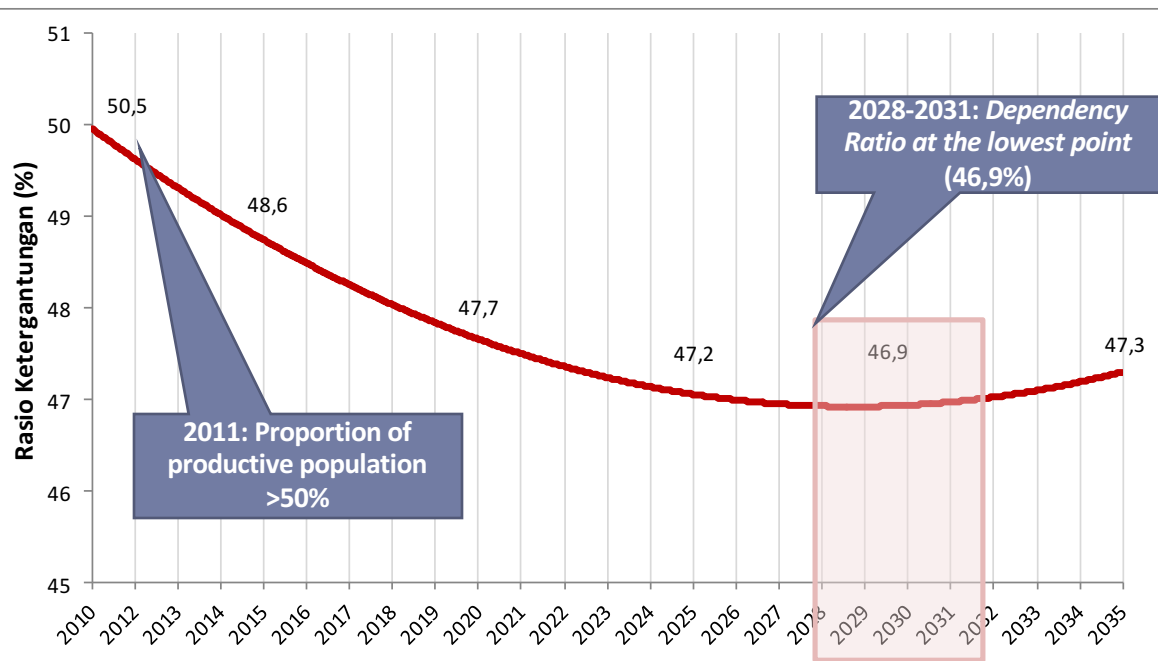
# I. BACKGROUND AND CONTEXT

## VISION INDONESIA'S LONGTERM DEVELOPMENT

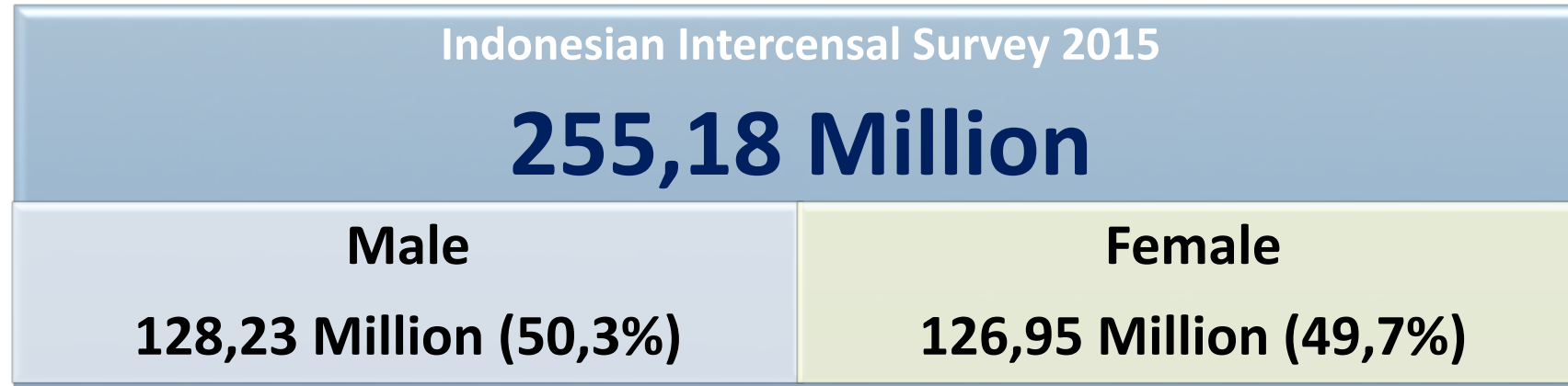
Based on Goldman Sachs projection, Indonesia will be the 6th biggest economy, with GDP will be around US\$ 26.000 Billion in 2050..... **need to go through high economic growth that is sustainable and inclusive.**



- Population in 2015 is 254.9 million people
- Changes in Demographic Structure brings Indonesia to experience **Demographic Bonus** between 2020-2030.
- Some caveats:
  - Triple burden of population
  - Will start to enter aging society in 2020 (around 71,6 million elderly in 2050).
  - Around 28 mio. people (10,86%) live under national poverty line, while half of population is vulnerable, including women and children.



# Indonesian Population: Male Vs Female



## Demographic dividend can be achieved by:

- Healthy and well educated people, including children, elderly, men and **women**
- Productive manpower, **including female workers**
- Economic stability and job availability

IF NOT  
TURNS  
TO:

- **Unemployment**
- **Social conflict**
- **Pressure on food security and environment**

- Women are investment, assets and potential of the nation that they may contribute significantly corresponds to their capacities and expertises.
- In the context of development, gender mainstreaming and women empowerment are closely link to efforts in improving the quality of next generation because women are primary educators in the family.



## II. ACHIEVEMENT OF GENDER EQUALITY IN INDONESIA RELATED TO MDGs INDICATORS

**GOAL 3  
PROMOTE GENDER EQUALITY AND  
EMPOWER WOMEN**

### TARGET 3A

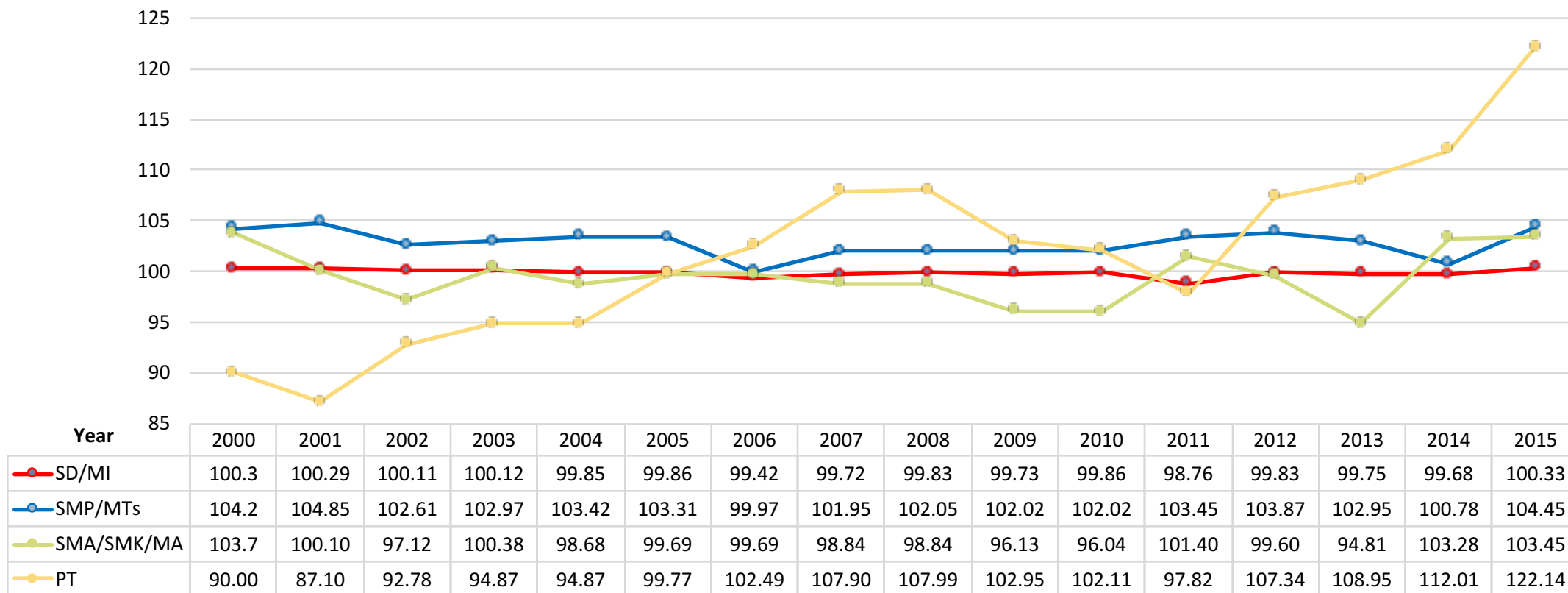
**ELIMINATE GENDER DISPARITY IN PRIMARY AND SECONDARY EDUCATION, PREFERABLY BY 2005, AND IN ALL LEVELS OF EDUCATION NO LATER THAN 2015**

	Indicator	Baseline	Current	MDG 2015 Target	Status	Source
3.1	Ratio of girls to boys in primary, secondary and tertiary education					BPS, National Socioeconomic Survey
	- Girl-boy NER ratio in primary education	100.27 (1993)	99.81 (2013)*	100.00	●	
	- Girl-boy NER ratio in lower secondary education	99.86 (1993)	105.69 (2013)*	100.00	●	
	- Girl-boy NER ratio in upper secondary education	93.67 (1993)	100.66 (2013)*	100.00	●	
	- Female-male NER ratio in tertiary education	74.06 (1993)	109.73 (2013)*	100.00	●	
3.1a	Ratio of literate girls to boys aged 15-24 years	98.44 (1993)	100.10 (2013)*	100.00	●	
3.2	Share of women in wage employment in non-agricultural sectors	29.24% (1990)	35.10% (2013)	Increase	▶	BPS, National Labour Force Survey
3.3	Proportion of seats held by women in the Indonesian Parliament	12.50% (1990)	17.30% (2014)	Increase	▶	General Elections Commission

Status : ● Achieved ▶ On Track ▼ Need Special Attention

## Trend in Ratio of NER for Girls to Boys by Educational Level, 2000-2015

Ratio of NER for Girls to Boys by Educational Level



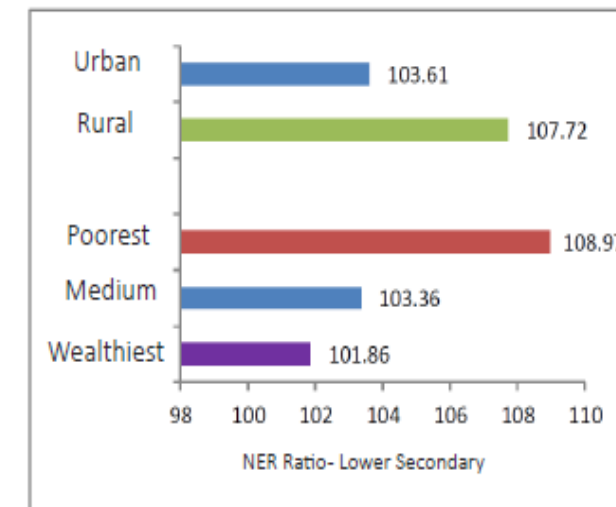
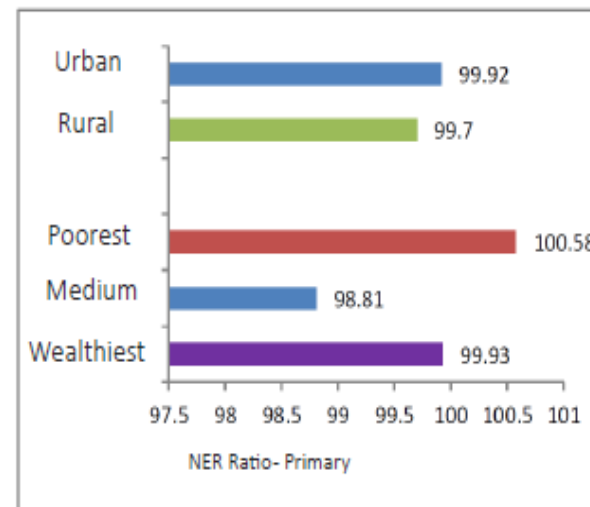
Source: BPS, National Socioeconomic Survey, various years.

# GENDER EQUALITY IN EDUCATION (2)

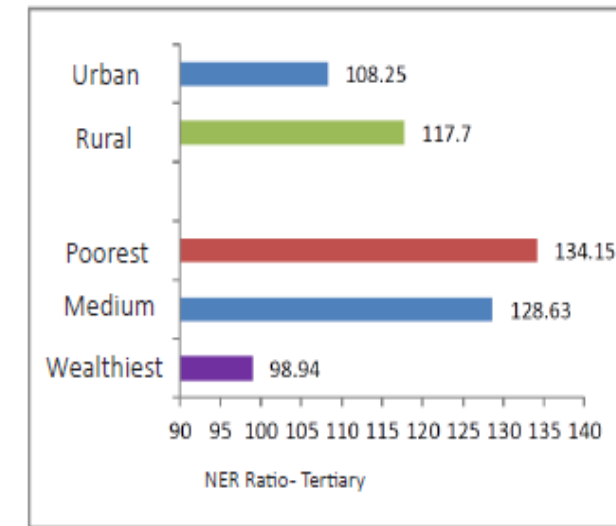
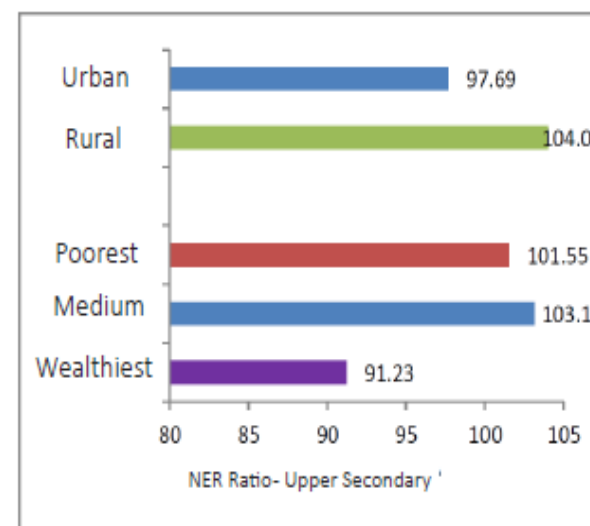
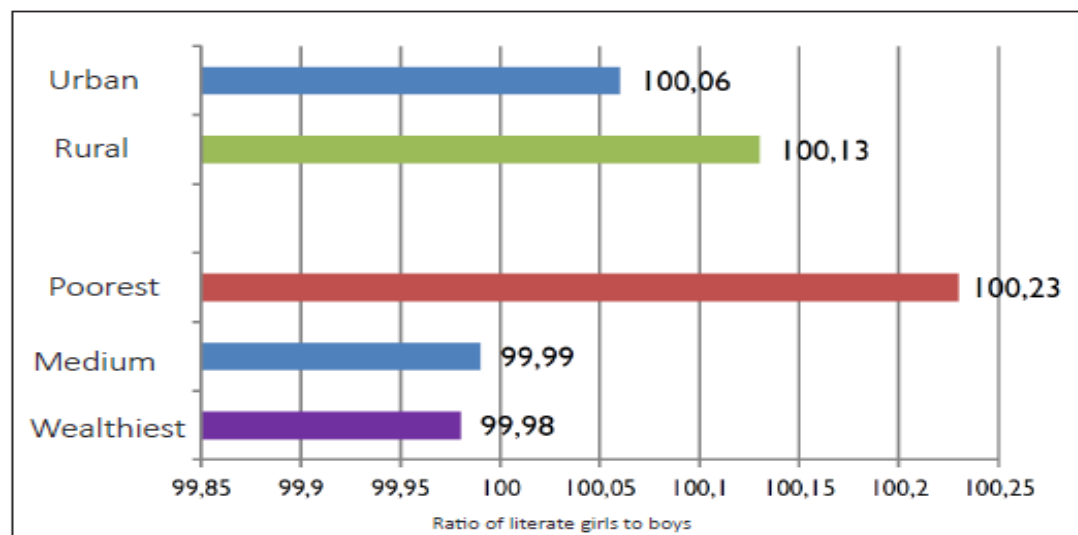
**NER Ratio at Each Level of Education, by Expenditure Levels, 2013**

Gap in education	Poorest (bottom 40%)	Middle income (middle 40%)	Wealthiest (top 20%)
NER ratio- Primary education	100.58	98.81	99.93
NER ratio- Lower secondary ed.	108.97	103.36	101.86
NER ratio- Upper secondary ed.	101.55	103.16	91.23
NER ratio- Tertiary education High	134.15	128.63	98.94

**NER by Level of Schooling, Urban/Rural Area and Economic Status**



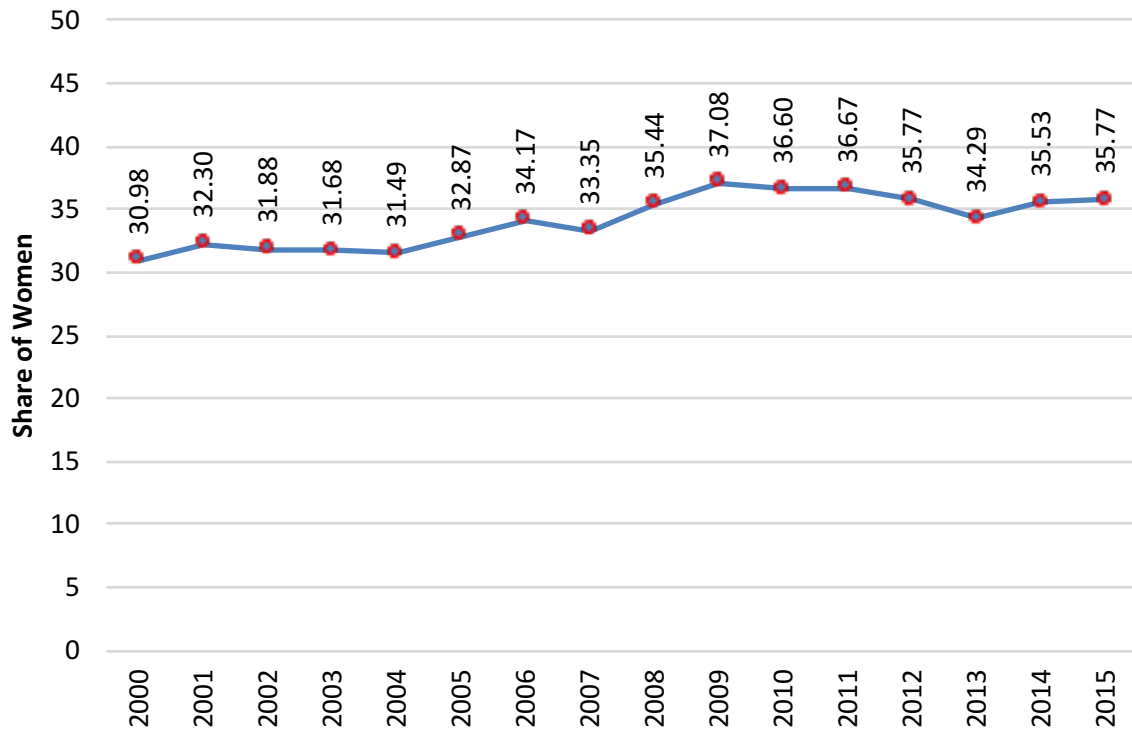
**Ratio of Literate Girls to Boys by Urban/Rural Area and Economic Status, 2013**



Source: BPS, National Socioeconomic Survey

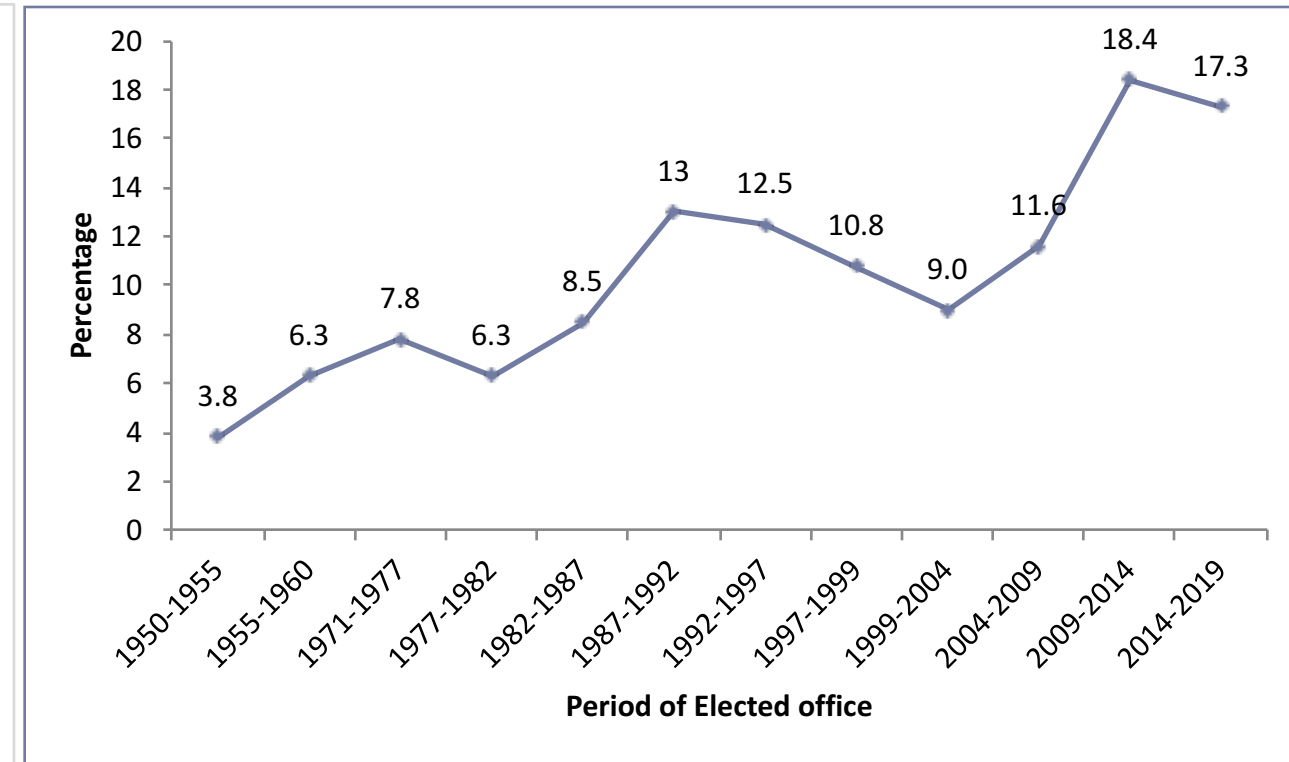
# GENDER EQUALITY IN ECONOMY AND POLITICS

## Share of Women in Wage Employment in Non-agricultural Sectors, 2000-2015



Source: BPS (various year)

## Trend in Women's Representation in The Indonesian Parliament by Term of Elected Office, Term of Elected Office 1950-2014



Source: General Elections Commission (KPU)

- Share of women in wage employment in non-agricultural sectors is still low and the disparity is still high among provinces
- Access of poor female-headed household to social protection and poverty eradication programs is still limited

# Gender Development Figure (1)

## Gender Development Index (GDI) and Gender Empowerment Measurement (GEM)

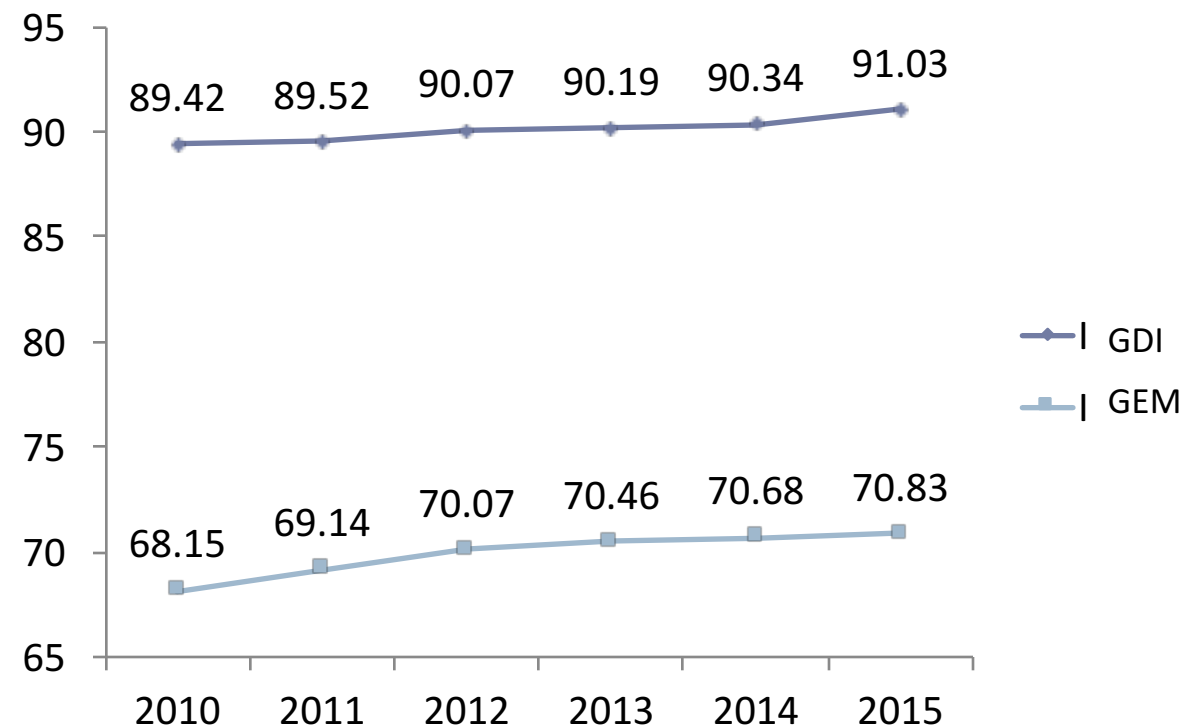
- GDI Components:

1. Life expectancy at birth
2. Expected years of schooling and mean years of schooling
3. Adjusted expenditure per capita

- GEM components:

1. Women representation in parliament
2. Women as manager, professional, administration, and technician
3. Estimation of women's income

The Progress of GDI new method and GEM  
Indonesia, 2010-2014



Source: BPS

# III. Efforts that have been made in Improving Gender Equality in Indonesia

---

**1. Mainstreaming Gender in Development Process  
(Planning, Budgeting, Implementation, Monitoring and Evaluation)**

**2. Gender Mainstreaming in the Implementation of SDGs in Indonesia**

**3. Example of good practices**

# 1. Mainstreaming Gender in Development Process (Planning, Budgeting, Implementing, Monitoring and Evaluation)

## A. Good Practice at Policy Level

**GBHN 1999-2004:** Gender equity and equality as one of the objectives of national development;  
**Propenas 2000-2004:** 19 development programs were considered gender responsive  
**Inpres No.9 / 2000:** The instruction for all ministries and government bodies as well as the regional heads to implement Gender Mainstreaming (PUG)

**RPJMN 2004-2009:** PUG is stated as one of the principles to be mainstreamed in all development policies/programs/activities; and  
**RPJPN 2005-2025.**

**2007:** Gender Responsive Planning and Budgeting (PPRG) **initiative**, based on evaluation result of implementing PUG in gov. agencies and regional gov

**RPJMN 2010-2014:** PUG be **integrated into planning and budgeting system**, PPRG, Gender Responsive Budgeting (ARG), Gender Budget Statement (GBS), Regulation of Minister of Finance (PMK), Regulation of Minister of Home Affairs (Permendagri), Circular Letter (SEB)

**2012:** National Strategy to Accelerate Gender Mainstreaming through PPRG (Stranas PPRG)

UU No. 6/2014 on Rurals that mandating the involvement of women in decision making

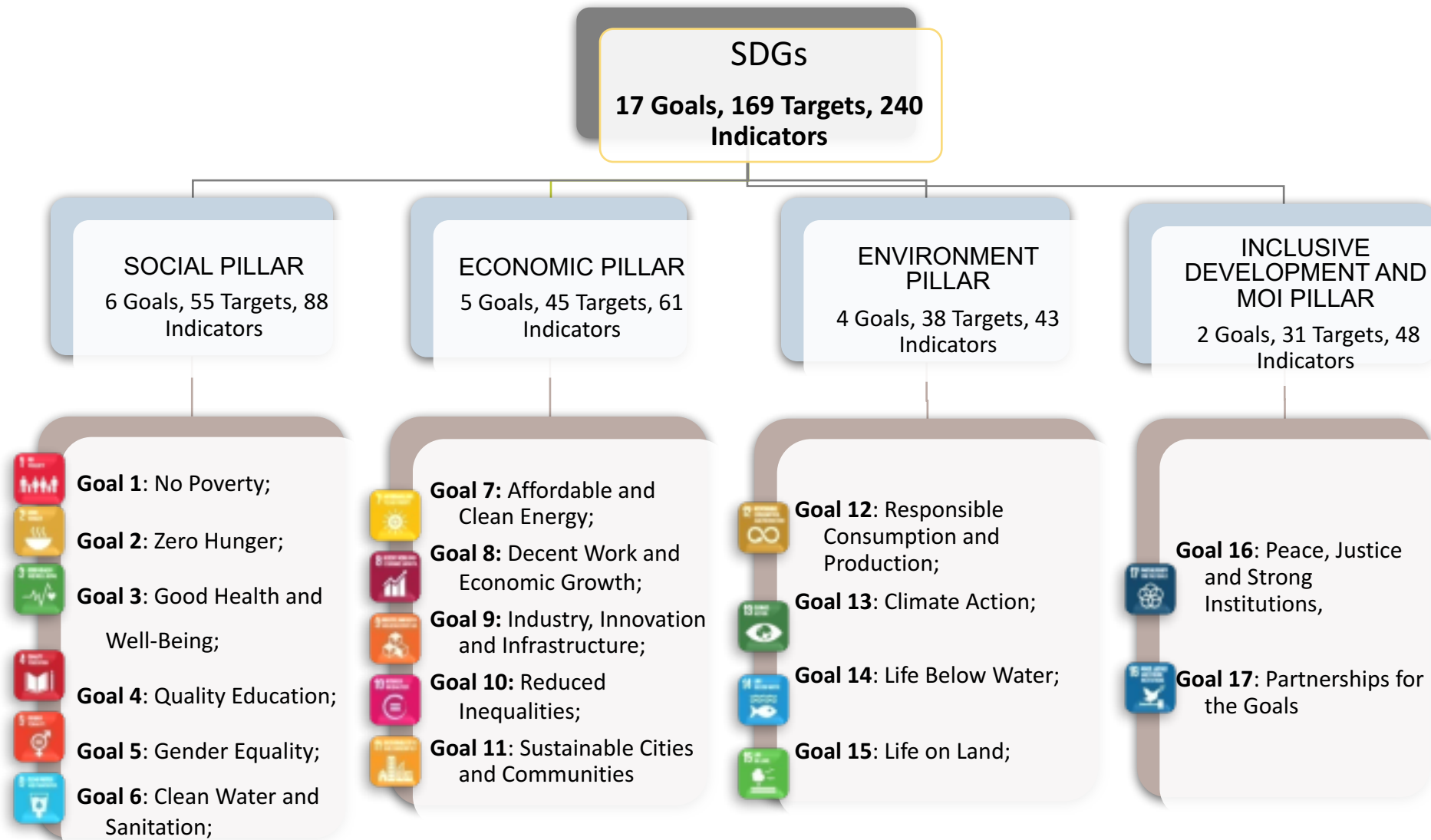
RPJMN 2015-2019: Gender Mainstreaming in national priorities

2016: Evaluation of Stranas PPRG to develop the existing strategy

2017: Mainstreaming gender in 10 national priorities in RKP 2018; Develop Stranas PPRG 2017-2020

# 2. Gender Mainstreaming in SDGs in Indonesian Policy (1)

## Indonesia SDGs Goals, Targets, and Indicators



## 2. Gender Mainstreaming in SDGs in Indonesian Policy (2)

### Strategy:

- Ensure the policy directions and indicators reflect SDG gender markers
- Ensure indicators are disaggregated by sex



### The Status of January 2017:

Based on the mapping of indicators SDGs, of the 240 indicators, there are more or less **120 indicators** relevant to gender.

#### Related to:

- |  |   |
|--|---|
|  Poverty                              |  Employment                                    |
|  Food and Nutrition                   |  Industry                                      |
|  Health, including Family Planning    |  Urban and Settlement                          |
|  Education                            |  Climate change                                |
|  Violence against women and children |  Marine                                      |
|  Clean water and sanitation         |  Peaceful, justice, and strong institutional |
|  Energy                             |  Partnership                                 |
|  Reduce inequality                  |   |

## **B. Successful collaborations with stakeholders**

### **1. Government**

The Ministry of Education has implemented reforms to realize gender equality and equity:

- a. Capacity building for policy makers and planners to be able to formulate gender sensitive policies, action plans and programs, such as gender responsive school education (PSBG), both at the national and sub-national levels
- b. Increased partnerships with women's studies centres and other research institutions
- c. Increased partnerships with NGOs / women's organizations in developing tailored training for women, including in gender-based family education (PKBG)
- d. Strengthening data systems to be able to collect credible gender statistics

### **2. Non State Actors**

Training of women in IT facilities and development of micro businesses by the Sragen Library Office and the Independent Women's Center (WMC) resulted in an increase in sales turnover of 30-40% per year through improved online marketing.

# Example of Good Practices (3)

## C. Leveraging investment in women through Official Development Assistance (ODA): Australia's MAMPU Program

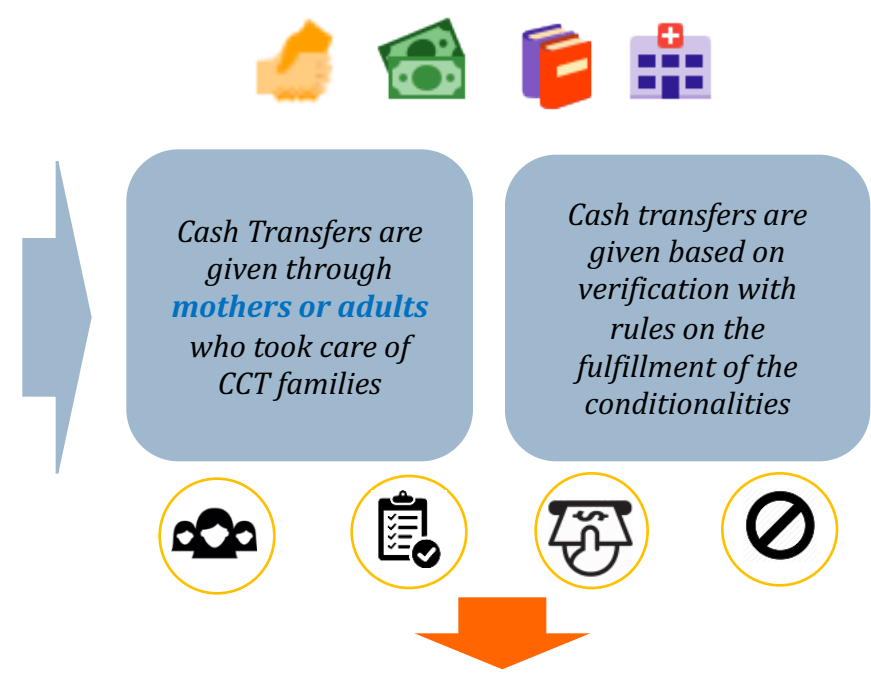
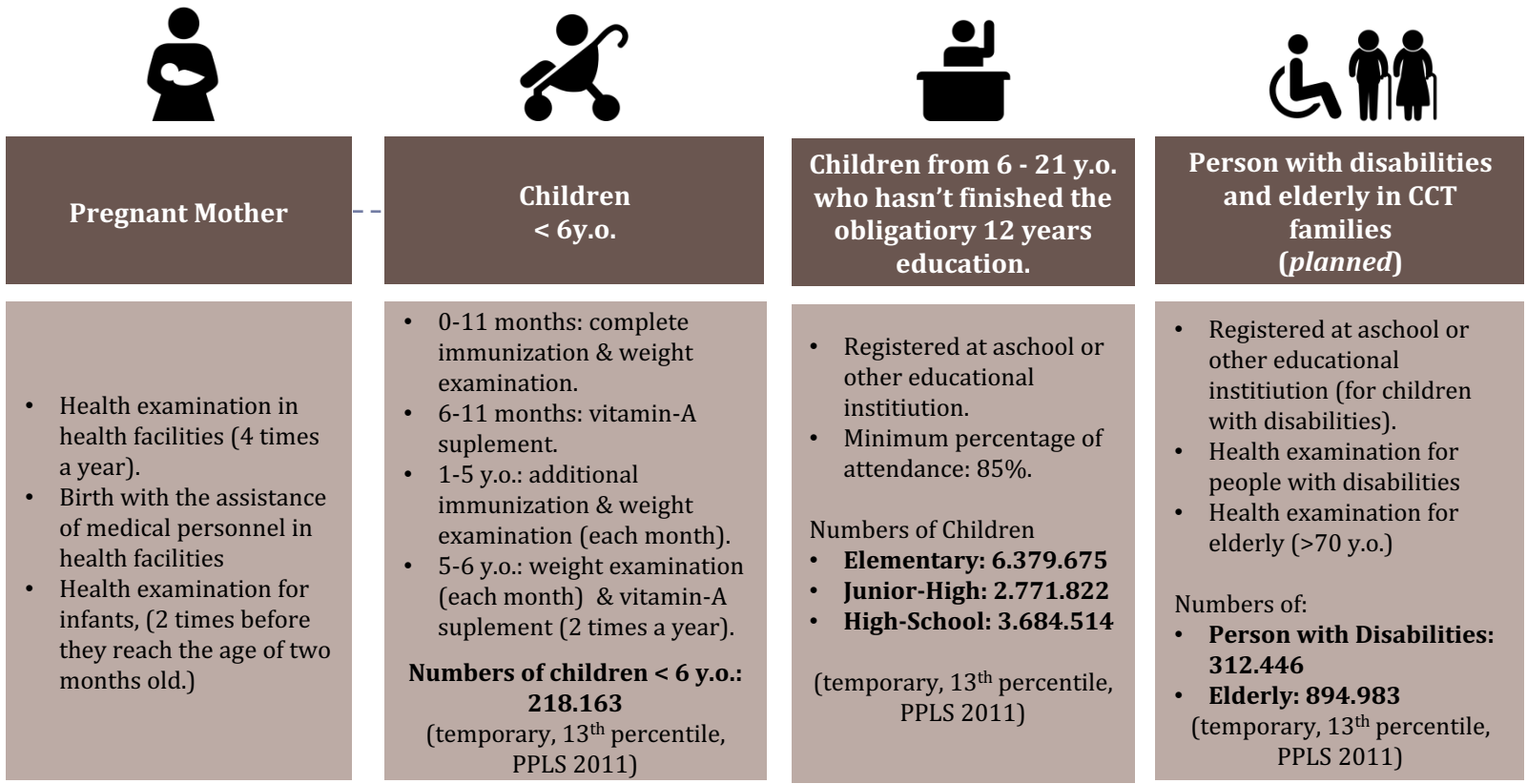
- Australia-Indonesia Partnership for Women's Empowerment and Gender Equality ('MAMPU Program'), 2012-2020
- Supports networks of CSOs (national and local) to work on solutions to **increase poor women's access to basic Government services and programs** in five thematic areas

- **DESBUMI** – Village-based approach to provide women migrant workers better access to services. Initially trialed by Australia in 18 villages, in October 2016, the Ministry for Labour rolled out the initiative to 100 villages across Indonesia.
- **'Integrated Criminal Justice System' (SPPT-PT)** – Is an integrated, cross-sectoral system for better handling cases of Violence Against Women between counsellors, police, health services, and court system. Initially trialed in Semarang, Central Java in 2015, the successful case management system was adopted by the provincial government of Central Java to scale up the approach across Central Java.

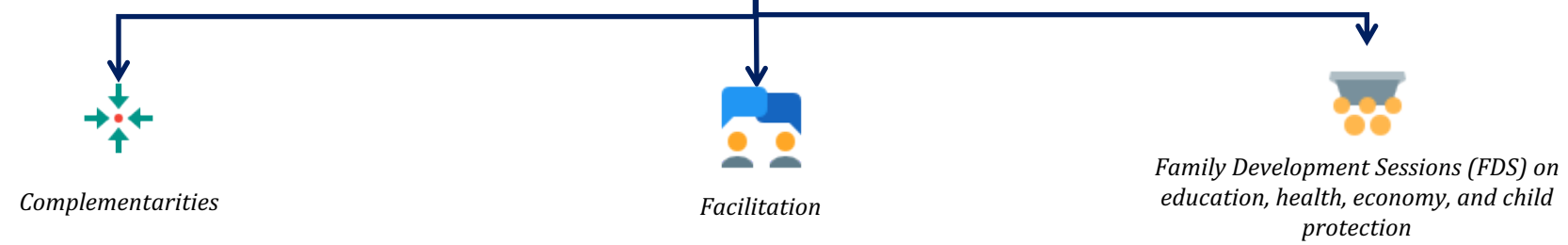


# 3. Example of Good Practices (3)

**Program Keluarga Harapan:** Conditional Cash Transfers for eligible poor families with responsibilities of accessing education and health services.



## Additional Intervention for CCT Families



Objectives	
Short-Term	Long-Term
To reduce financial burden of poor families	To improve the quality of human capital and cut intergenerational cycle of poverty.

# IV. CHALLENGES AND RECOMMENDATIONS

## *Challenges*

1. *The mindset* of decision makers still interprets gender as a woman's agenda and product of the West, and therefore they persist in gender bias and discrimination,
2. Gender mainstreaming has not yet been implemented in all facets of development mainly due to lack of commitment, limited capacity of human resources, availability of data-disaggregated by sex,
3. Protection of women and children remains inadequate, particularly related to human trafficking and violence in increasingly complex and diverse forms, including physical and psychological violence, exploitation, neglect and so on,
4. Political education for women candidates face many impediments,
5. Provision, analysis, and use of data disaggregated by sex in all areas of development.

## *Recommendations*

1. Strengthening commitment of decision makers and policy makers
2. Strengthening gender mainstreaming and violence againts women coordination of implementing, monitoring, and evaluating among governments, communities/CSOs, and private sectors
3. Strengthening regulation and legal framework for the implementation of gender mainstreaming policy
4. Strengthening partnership with CSOs and universities to address gender issues
5. Insentive provision for private sectors who are implementing gender responsive policy (since the Inpres 9/2000 does not mandate the private sectors)
6. Strengthening data-disaggregated by sex
7. Unified database for targeting poverty and social protection programs
8. Improving consistency and sustainability of innovative strategies in ministries, agencies and regional governments



**THANK YOU**